



一站式 ONE-STOP SERVICE 服务



佛山市领缝缝纫设备有限公司

FOSHAN LINGFENG SEWING EQUIPMENT CO., LTD.

网址: www.lingfengji.com Web: www.letsews.com

邮箱 /E-mail: gdmjzn@163.com

电话: 0086-757-81220058

地址: 广东省佛山市南海区里水镇甘蕉社区年丰路3号

Add: no.3 Nianfeng Road, ganjiao Community, Lishui Town, nanhai District, foshan City, guangdong Provice



抖音号
Tiktok



阿里巴巴
Alibaba

LETSEW[®]

领缝智能科技

THE POCKET WELTING MACHINE

AFRAID OF REWORK, OF COURSE CHOOSE LETSEW!

开袋怕返工 当然用领缝



佛山市领缝缝纫设备有限公司

FOSHAN LINGFENG SEWING EQUIPMENT CO., LTD.

ABOUT LINGFENG

关于领缝

佛山市领缝缝纫设备有限公司，成立于2012年，位于广东省佛山市，是一家专注于服装行业的自动化缝纫设备及辅助产品研发、设计、生产、销售和服务于一体的高新技术企业。研发团队由高素质的科技人才、缝纫工艺及模板工艺专家组成，具备丰富的行业经验和创新能力，致力于为全球服装制造企业提供先进的缝纫设备和技术，助力行业升级和转型。

我们的产品涵盖了全自动开袋机、自动袖叉机、智能平车吸风款(小型模板机)、自动脚叉机，自动字母识别送扣机，衣领落下级等自动化缝纫机，凭借高品质的产品和优质的售后服务，赢得了广大客户的信赖。我们的客户群体遍布国内外，包括知名品牌服装制造商、中小型服装加工企业。

未来，我们将继续秉承“创新、务实、共赢”的企业精神，努力成为全球领先的缝纫设备制造商和服务商，为推动服装行业的繁荣和发展贡献我们的力量。

Foshan lingfeng sewing equipment Co.,Ltd. founded in 2012 and located in Foshan,Guangdong Province,is a high-tech enterprise dedicated to researching, designing, manufacturing, selling, and providing services for automated sewing equipment and accessories in the apparel industry. Our R&D team consists of high-quality technical talents, experts in sewing and template technology, and possesses rich industry experience and innovative capabilities. We are committed to providing advanced sewing equipment and technology for global apparel manufacturing companies, contributing to the upgrading and transformation of the industry.

Our product range includes fully automatic bag opening machines, automatic sleeve forking machines, smart flatbed blower (mini-template machine), automatic foot forking machines, automatic letter recognition and button feeding machines, collar dropping machines, and other automated sewing machines. With high-quality products and excellent after-sales service, we have won the trust of numerous clients. Our client base spans both domestic and international markets, including well-known brand apparel manufacturers and small and medium-sized clothing processing enterprises.

In the future, our company will continue to uphold the enterprise spirit of "innovation, pragmatism, and win-win cooperation," striving to become a global leading sewing equipment manufacturer and service provider, contributing to the prosperity and development of the apparel industry.

CONTENT

目录

04 全自动开袋机系列
Automatic pocket welting machine series

12 字符识别送扣机
Character button feeder machine

13 智能平车吸风款
Smart sewing machine with fan

14 自动脚叉机
Automatic foot-crossing sewing machine

15 自动衬衫袖叉机
Automatic shirt sleeve slitting machine

16 大袖叉烫机
Big sleeves ironing machine

17 客户案例
Customer case

18 展会风采
Exhibition style

拥有50多项发明专利/实用新型专利
Possess over 50 invention/utility model patents



全自动开袋机系列

Automatic pocket welting machine series

| | |
|---|----|
| 全自动开袋机 Automatic pocket welting machine LF-Q7 (热销款/Hot selling item) | 04 |
| 全自动开袋机 Automatic pocket welting machine LF-C3 (长臂机头款/Long arm head model) | 05 |
| 全自动开袋机 Automatic pocket welting machine LF-Y5 (原身袋款/Original pocket model) | 06 |
| 全自动开袋机 Automatic pocket welting machine LF-S8 (升降台板款/Lifting platform model) | 07 |
| 全自动开袋机 Automatic pocket welting machine LF-J9 (加长款/Longer model) | 08 |
| 全自动开袋机 Automatic pocket welting machine LF-Q10 (数字调码款/Digital adjustment size model) | 09 |

LF-Q7 (热销款/Hot selling item) 全自动开袋机

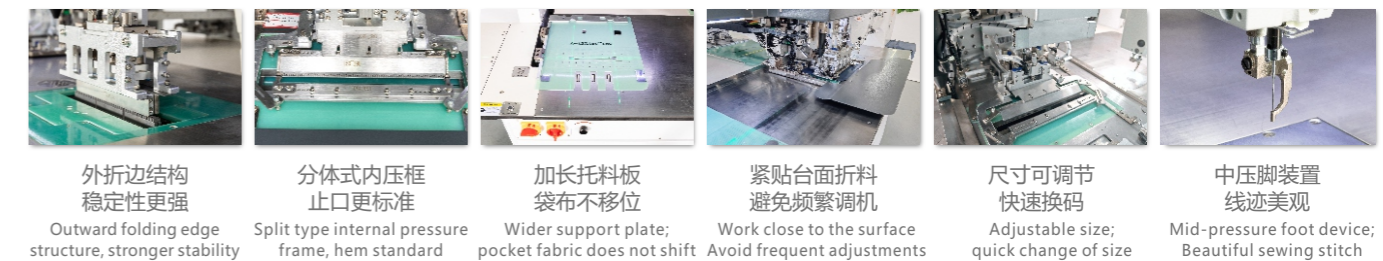
Automatic pocket welting machine

主要功能 MAIN FUNCTIONS

- 明线车缝+打套结一次成型，无需人工翻袋
Completes the sewing of the surface thread and finish bartack stitching
- 带有吸风免烫功能
With suction ironing function
- 红外线定位
Infrared positioning
- 电脑快速打版，可存储图型
Computer for quick plate making, can store patterns
- 口袋尺寸可调节，快速换码
Pocket size is adjustable, quick change of size
- 缝制口袋速度：20-32秒/个
Pocket sewing speed: 20-32 seconds/piece
- 适用口袋类型：真假袋、单唇袋、双唇袋、拉链袋等
Applicable pocket type: true and false pocket, single-lip pocket, double-lip pocket, zipper pocket, etc



产品特点 PRODUCT FEATURES



- 外折边结构 稳定性更强
Outward folding edge structure, stronger stability
- 分体式内压框 止口更标准
Split type internal pressure frame, hem standard
- 加长托料板 袋布不移位
Wider support plate; pocket fabric does not shift
- 紧贴台面折料 避免频繁调机
Work close to the surface Avoid frequent adjustments
- 尺寸可调节 快速换码
Adjustable size; quick change of size
- 中压脚装置 线迹美观
Mid-pressure foot device; Beautiful sewing stitch

技术参数 TECHNICAL PARAMETERS

| 型号 | Model | LF-Q7 |
|----------|--------------------------|--|
| 额定功率 | Rated power | 常规1.2kw (峰值: 2.8kw) Regular 1.2kw (Peak: 2.8kw) |
| 额定电压 | Rated vol | 220V单相50Hz (有地线) 220V single phase 50Hz (with ground wire) |
| 缝纫针距 | Stitch length | 0.1mm-5mm |
| 速度设定 | Speed setting | 100-3000转/分钟 100-3000rpm/min |
| 缝纫机针 | Sewing machine needle | DpX17 (9#-22#) |
| 使用梭床 | Shuttle bed | 摆梭 Pendulum, shuttle |
| 压脚上升高度 | Presser foot lift height | 0-25mm |
| 激光功率 | Laser power | 110W |
| 主轴电机 | Main shaft motor | 直驱式750W伺服电机 Direct drive 750W servo motor |
| 控制系统 | Control system | 微电脑控制 Microcomputer control |
| 缝制范围 | Sewing range | Width:1.1-3.5cm Length:7-22cm |
| 缝制范围(定制) | Customized sewing scope | Width:2.5-3.5cm Length:20-22cm |
| 使用气压 | Air pressure | 0.6Mpa |
| 机器净重 | Machine N.W. | 960kg |
| 机器尺寸 | Machine size | 204cm(Length)*130cm(Width)*143cm(Height) |

LF-C3 (长臂机头款/Long arm head model)

全自动开袋机

Automatic pocket welting machine

主要功能 MAIN FUNCTIONS

明线车缝+打套结一次成型, 无需人工翻袋
Completes the sewing of the surface thread and finish bartack stitching

带有吸风免烫功能
With suction ironing function

红外线定位
Infrared positioning

电脑快速打版, 可存储图型
Computer for quick plate making, can store patterns

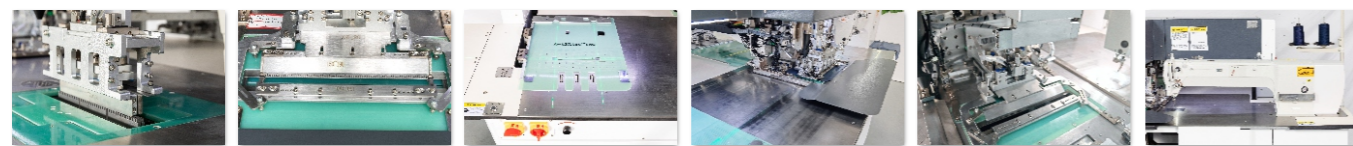
口袋尺寸可调节, 快速换码
Pocket size is adjustable, quick change of size

缝制口袋速度: 20-30秒/个
Pocket sewing speed: 20-30 seconds/piece

适用口袋类型: 真假袋、单唇袋、双唇袋、拉链袋等
Applicable pocket type: true and false pocket, single-lip pocket, double-lip pocket, zipper pocket, etc



产品特点 PRODUCT FEATURES



- 外折边结构 稳定性更强
Outward folding edge structure, stronger stability
- 分体式内压框 止口更标准
Split type internal pressure frame, hem standard
- 加长托料板 袋布不移位
Wider support plate; pocket fabric does not shift
- 紧贴台面折料 避免频繁调机
Work close to the surface Avoid frequent adjustments
- 尺寸可调节 快速换码
Adjustable size; quick change of size
- 长臂机头 操作空间更宽
Long-arm head Operating space is wider

技术参数 TECHNICAL PARAMETERS

| 型号 | Model | LF-C3 |
|----------|--------------------------|--|
| 额定功率 | Rated power | 常规1.2kw (峰值: 2.8kw) Regular 1.2kw (Peak: 2.8kw) |
| 额定电压 | Rated vol | 220V单相50Hz (有地线) 220V single phase 50Hz (with ground wire) |
| 缝纫针距 | Stitch length | 0.1mm-5mm |
| 速度设定 | Speed setting | 100-3000转/分钟 100-3000rpm/min |
| 缝纫机针 | Sewing machine needle | DpX17 (9#-22#) |
| 使用梭床 | Shuttle bed | 摆梭 Pendulum,shuttle |
| 压脚上升高度 | Presser foot lift height | 0-25mm |
| 激光功率 | Laser power | 120W |
| 主轴电机 | Main shaft motor | 直驱式750W伺服电机 Direct drive 750W servo motor |
| 控制系统 | Control system | 微电脑控制 Microcomputer control |
| 缝制范围 | Sewing range | Width:0.8-4cm Length:3-22cm |
| 缝制范围(定制) | Customized sewing scope | Width:0.8-1cm/2.5-4cm Length:3-7cm/20-22cm |
| 使用气压 | Air pressure | 0.6Mpa |
| 机器净重 | Machine N.W. | 1000kg |
| 机器尺寸 | Machine size | 230cm(Length)*130cm(Width)*143cm(Height) |

LF-Y5 (原身袋款/Original pocket model)

全自动开袋机

Automatic pocket welting machine

主要功能 MAIN FUNCTIONS

明线车缝+打套结一次成型, 无需人工翻袋。
Completes the sewing of the surface thread and finish bartack stitching

带有吸风免烫功能
With suction ironing function

红外线定位
Infrared positioning

电脑快速打版, 可存储图型
Computer for quick plate making, can store patterns

口袋尺寸可调节, 快速换码
Pocket size is adjustable, quick change of size

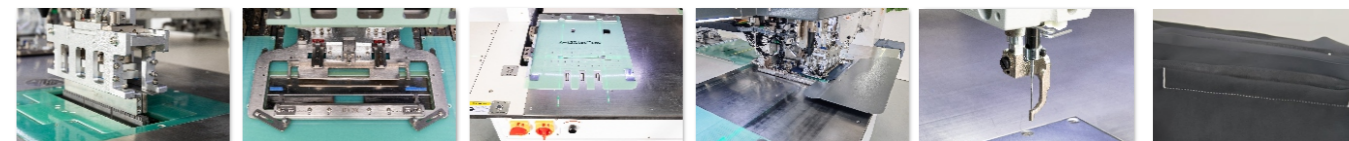
缝制口袋速度: 20-30秒/个
Pocket sewing speed: 20-30 seconds/piece

增加原身袋款口袋功能
Add original pocket making function

适用口袋类型: 真假袋、单唇袋、双唇袋、拉链袋等
Applicable pocket type: true and false pocket, single-lip pocket, double-lip pocket, zipper pocket, etc



产品特点 PRODUCT FEATURES



- 外折边结构 稳定性更强
Outward folding edge structure, stronger stability
- 特定原身袋夹具
Specific original pocket fixture
- 加长托料板 袋布不移位
Wider support plate; pocket fabric does not shift
- 紧贴台面折料 避免频繁调机
Work close to the surface Avoid frequent adjustments
- 中压脚装置 线迹美观
Mid-pressure foot device; Beautiful sewing stitch
- 原身袋款 原身布折边
Original body pocket style; original fabric folded edge

技术参数 TECHNICAL PARAMETERS

| 型号 | Model | LF-Y5 |
|----------|--------------------------|--|
| 额定功率 | Rated power | 常规1.2kw (峰值: 2.8kw) Regular 1.2kw (Peak: 2.8kw) |
| 额定电压 | Rated vol | 220V单相50Hz (有地线) 220V single phase 50Hz (with ground wire) |
| 缝纫针距 | Stitch length | 0.1mm-5mm |
| 速度设定 | Speed setting | 100-3000转/分钟 100-3000rpm/min |
| 缝纫机针 | Sewing machine needle | DpX17 (9#-22#) |
| 使用梭床 | Shuttle bed | 摆梭 Pendulum,shuttle |
| 压脚上升高度 | Presser foot lift height | 0-25mm |
| 激光功率 | Laser power | 120W |
| 主轴电机 | Main shaft motor | 直驱式750W伺服电机 Direct drive 750W servo motor |
| 控制系统 | Control system | 微电脑控制 Microcomputer control |
| 缝制范围 | Sewing range | Width:0.8-4cm Length:3-22cm |
| 缝制范围(定制) | Customized sewing scope | Width:0.8-1cm/2.5-4cm Length:3-7cm/20-22cm |
| 使用气压 | Air pressure | 0.6Mpa |
| 机器净重 | Machine N.W. | 960kg |
| 机器尺寸 | Machine size | 204cm(Length)*130cm(Width)*143cm(Height) |

LF-S8 (升降台板款/Lifting platform model)

全自动开袋机

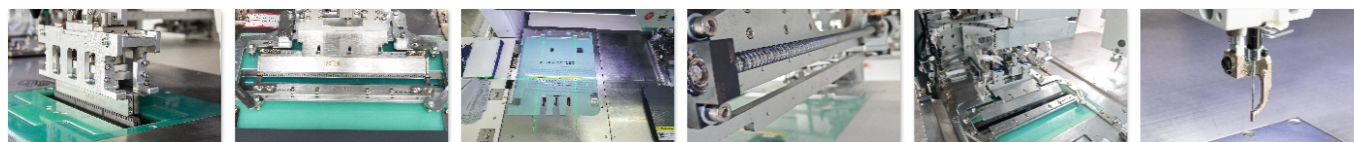
Automatic pocket welting machine

主要功能 MAIN FUNCTIONS

- 明线车缝+打套结一次成型，无需人工翻袋
Completes the sewing of the surface thread and finish bartack stitching
- 带有吸风免烫功能
With suction ironing function
- 红外线定位
Infrared positioning
- 电脑快速打版，可存储图型
Computer for quick plate making, can store patterns
- 口袋尺寸可调节，快速换码
Pocket size is adjustable, quick change of size
- 缝制口袋速度：20-28秒/个
Pocket sewing speed: 20-28 seconds/piece
- 适用口袋类型：真假袋、单唇袋、双唇袋、拉链袋等
Applicable pocket type: true and false pocket, single-lip pocket, double-lip pocket, zipper pocket, etc



产品特点 PRODUCT FEATURES



- 外折边结构 稳定性更强
Outward folding edge structure, stronger stability
- 分体式内压框 止口更标准
Split type internal pressure frame, hem standard
- 升降台板 速度提升10%
Lift platform; Speed increased by 10%.
- 送托板采用电机丝杆
The conveyor board adopts the motor screw shaft.
- 尺寸可调节 快速换码
Adjustable size; quick change of size
- 中压脚装置 线迹美观
Mid-pressure foot device; Beautiful sewing stitch

技术参数 TECHNICAL PARAMETERS

| | | |
|----------|--------------------------|--|
| 型号 | Model | LF-S8 |
| 额定功率 | Rated power | 常规1.2kw (峰值: 2.8kw) Regular 1.2kw (Peak: 2.8kw) |
| 额定电压 | Rated vol | 220V单相50Hz (有地线) 220V single phase 50Hz (with ground wire) |
| 缝纫针距 | Stitch length | 0.1mm-5mm |
| 速度设定 | Speed setting | 100-3000转/分钟 100-3000rpm/min |
| 缝纫机针 | Sewing machine needle | DpX17 (9#-22#) |
| 使用梭床 | Shuttle bed | 摆梭 Pendulum,shuttle |
| 压脚上升高度 | Presser foot lift height | 0-25mm |
| 激光功率 | Laser power | 120W |
| 主轴电机 | Main shaft motor | 直驱式750W伺服电机 Direct drive 750W servo motor |
| 控制系统 | Control system | 微电脑控制 Microcomputer control |
| 缝制范围 | Sewing range | Width:0.8-4cm Length:3-22cm |
| 缝制范围(定制) | Customized sewing scope | Width:0.8-1cm/2.5-4cm Length:3-7cm/20-22cm |
| 使用气压 | Air pressure | 0.6Mpa |
| 机器净重 | Machine N.W. | 970kg |
| 机器尺寸 | Machine size | 204cm(Length)*130cm(Width)*143cm(Height) |

LF-J9 (加长款/Longer model)

全自动开袋机

Automatic pocket welting machine

主要功能 MAIN FUNCTIONS

- 明线车缝+打套结一次成型，无需人工翻袋。
Completes the sewing of the surface thread and finish bartack stitching
- 带有吸风免烫功能
With suction ironing function
- 红外线定位
Infrared positioning
- 电脑快速打版，可存储图型
Computer for quick plate making, can store patterns
- 口袋尺寸可调节，快速换码
Pocket size is adjustable, quick change of size
- 适合各种服装、箱包类的长口袋，最长35cm
Long pockets suitable for various clothing, bags, etc., with a maximum length of 35
- 适用口袋类型：真假袋、单唇袋、双唇袋、拉链袋等
Applicable pocket type: true and false pocket, single-lip pocket, double-lip pocket, zipper pocket, etc



产品特点 PRODUCT FEATURES



- 外折边结构 稳定性更强
Outward folding edge structure, stronger stability
- 长口袋模具 加宽大底板
Long pocket mold; widened base plate
- 10寸加大操作屏
10 inch large screen
- 紧贴台面折料 避免频繁调机
Work close to the surface Avoid frequent adjustments
- 尺寸可调节 快速换码
Adjustable size; quick change of size
- 长臂机头 操作空间更宽
Long-arm head Operating space is wider

技术参数 TECHNICAL PARAMETERS

| | | |
|--------|--------------------------|--|
| 型号 | Model | LF-J9 |
| 额定功率 | Rated power | 常规1.2kw (峰值: 2.8kw) Regular 1.2kw (Peak: 2.8kw) |
| 额定电压 | Rated vol | 220V单相50Hz (有地线) 220V single phase 50Hz (with ground wire) |
| 缝纫针距 | Stitch length | 0.1mm-5mm |
| 速度设定 | Speed setting | 100-3000转/分钟 100-3000rpm/min |
| 缝纫机针 | Sewing machine needle | DpX17 (9#-22#) |
| 使用梭床 | Shuttle bed | 摆梭 Pendulum,shuttle |
| 压脚上升高度 | Presser foot lift height | 0-25mm |
| 激光功率 | Laser power | 120W |
| 主轴电机 | Main shaft motor | 直驱式750W伺服电机 Direct drive 750W servo motor |
| 控制系统 | Control system | 微电脑控制 Microcomputer control |
| 缝制范围 | Sewing range | Width:0.8-4cm Length:8-35cm |
| 使用气压 | Air pressure | 0.6Mpa |
| 机器净重 | Machine N.W. | 1125kg |
| 机器尺寸 | Machine size | 242cm(Length)*130cm(Width)*143cm(Height) |

LF-Q10 (数字调码款/Digital adjustment size model)

全自动开袋机

Automatic pocket welting machine

主要功能 MAIN FUNCTIONS

明线车缝+打套结一次成型，无需人工翻袋
Completes the sewing of the surface thread and finish bartack stitching

带有吸风免烫功能
With suction ironing function

红外线定位
Infrared positioning

电脑快速打版，可存储图型
Computer for quick plate making, can store patterns

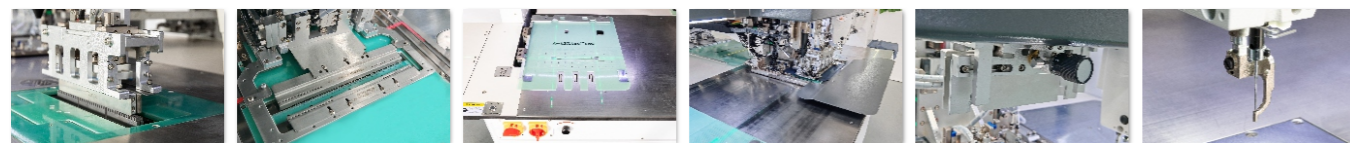
口袋尺寸变化可数字自动调节，无需换模
Pocket size change can be digitally adjusted automatically, no need to change the mold.

缝制口袋速度：20-30秒/个
Pocket sewing speed: 20-32 seconds/piece

适用口袋类型：真假袋、单唇袋、双唇袋、拉链袋等
Applicable pocket type: true and false pocket, single-lip pocket, double-lip pocket, zipper pocket, etc



产品特点 PRODUCT FEATURES



- 外折边结构 稳定性更强
Outward folding edge structure, stronger stability
- 分体式自动调节压框 止口更标准
Automatic pressure frame hem standard
- 加长托料板 袋布不移位
Wider support plate; pocket fabric does not shift
- 紧贴台面折料 避免频繁调机
Work close to the surface Avoid frequent adjustments
- 自动换模 尺寸自动调节
Automatic mold change; Size auto-adjustment
- 中压脚装置 线迹美观
Mid-pressure foot device; Beautiful sewing stitch

技术参数 TECHNICAL PARAMETERS

| | | |
|----------|--------------------------|---|
| 型号 | Model | LF-Q10 |
| 额定功率 | Rated power | 常规1.2kw (峰值: 2.8kw) Regular 1.2kw (Peak: 2.8kw) |
| 额定电压 | Rated vol | 220V单相50Hz (有地线) 220V single phase 50Hz (with ground wire) |
| 缝纫针距 | Stitch length | 0.1mm-5mm |
| 速度设定 | Speed setting | 100-3000转/分钟 100-3000rpm/min |
| 缝纫机针 | Sewing machine needle | DpX17 (9#-22#) |
| 使用梭床 | Shuttle bed | 摆梭 Pendulum,shuttle |
| 压脚上升高度 | Presser foot lift height | 0-25mm |
| 激光功率 | Laser power | 120W |
| 主轴电机 | Main shaft motor | 直驱式750W伺服电机 Direct drive 750W servo motor |
| 控制系统 | Control system | 微电脑控制 Microcomputer control |
| 缝制范围 | Sewing range | Width:0.8-4cm Length:3-22cm |
| 缝制范围(选配) | Optional sewing range | Width:0.8-2cm, 2-3cm, 3-4cm, Length:7-20cm,7-22cm; (可调范围: 0-2cm) Adjustable space (0-2cm) |
| 使用气压 | Air pressure | 0.6Mpa |
| 机器净重 | Machine N.W. | 960kg |
| 机器尺寸 | Machine size | 204cm(Length)*130cm(Width)*143cm(Height) |

PRODUCT DESCRIPTION

硬核技术

Hardcore technology

售后无忧 AFTER-SALES WORRY-FREE

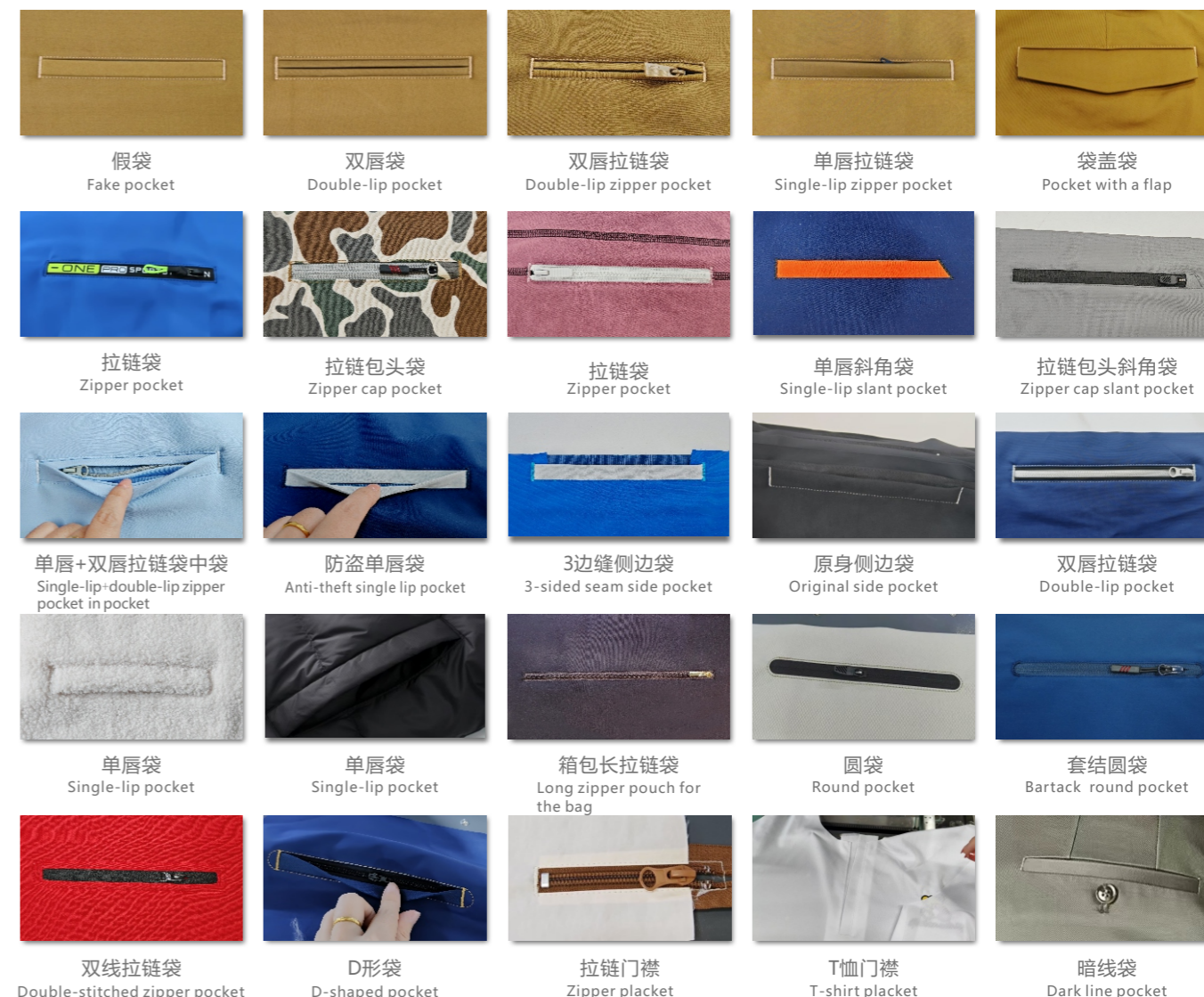
强大售后服务团队，极速响应，服务零距离
Powerful after-sales service team, rapid response, zero distance service

资深工程师，硬核技术，不断优化，提升服务质量
Senior engineer, hard-core technology, continuous optimization, improve service quality

专业技术培训体系，赋能客户团队人才
Professional technical training system, empowering customer team talent

海量线上教程，随查随学，轻松掌握
Massive online tutorials, learn as you go, master easily

工艺展示 CRAFTSMANSHIP DISPLAY



智能缝制单元系列

Smart sewing unit series

| | |
|--|----|
| 字符识别送扣机 Character button feeder machine LF-SC-SP02 | 12 |
| 智能平车吸风款 Smart sewing machine with fan LF-PZN5030-X | 13 |
| 自动脚叉机 Automatic foot-crossing sewing machine LF-PZN02-JC01 | 14 |
| 自动衬衫袖叉机 Automatic shirt sleeve plackets machine LF-PZN02-XC02 | 15 |
| 大袖叉烫机 Big sleeves ironing machine LF-TJ-XC02 | 16 |

LF-SC-SP02 字符识别送扣机

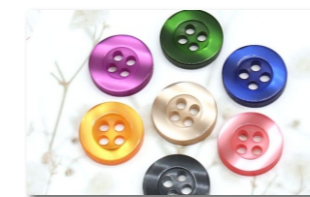
Character button feeder machine

产品特点 FEATURES

- 1.识别准确率高: 采用专用视觉识别, 速度更快, 准确率更高
High recognition accuracy: special visual recognition is adopted, which is faster and more accurate
- 2.高速识别送扣: 12000-15000pcs/10h, 速度快, 并且准确率高达99.99%
High-speed identification and delivery: 12000-15000pcs/10h, fast, and the accuracy rate is as high as 99.99%
- 3.系统操作简单: 自主开发操作系统, 操作简单, 上手快, 系统稳定
Simple system operation: self-developed operating system, simple operation, quick to get started, and the system is stable
- 4.模板储存量大: 万条历史模板智能储存量, 后续工作更便捷
Large storage capacity of templates: Intelligent storage capacity of 10,000 historical templates makes subsequent work more convenient
- 5.适用扣子广泛 (普通扣子, 字符扣子)
Applicable to a wide range of buttons (ordinary buttons, character buttons)
- 6.适配性广: 全面支持重机, 兄弟等多机型配套
Wide adaptability: Full support for heavy machinery, JUKI and Bother other multiple models
- 7.送扣速度快: 取代人工送扣的多余工序, 大幅度提升钉扣效率
Fast button delivery speed: replace the redundant process of manual button delivery, greatly improve the efficiency of button fastening



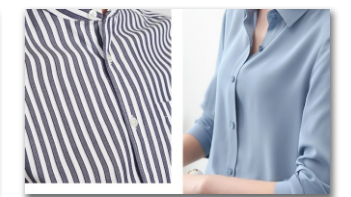
应用场景 APPLICATION SCENARIO



普通扣子
Ordinary button



字符扣子
Character button



技术参数 TECHNICAL PARAMETERS

| | | |
|--------|-----------------------|--|
| 型号 | Model | LF-SC-SP02 |
| 额定功率 | Rated Power | 50W |
| 使用气压 | Air Pressure | 0.3-0.35Mpa |
| 额定电压 | Rated Vol | 220V单相50Hz(必须有地线) 220V Single phase 50Hz (Earth wire is needed) |
| 送扣速度 | Thread feeding speedt | 12000-15000pcs/8h |
| 识别正确率 | Recognition accuracy | 99.99% |
| 纽扣直径 | Recognition accuracy | 10-20mm |
| 摄像头分辨率 | Camera resolution | 可选配 Optional |
| 机器重量 | Machine weight | 79kg |
| 机器尺寸 | Machine measurement | 120cm(Length)X55cm(Width)X144cm(Height) |

LF-PZN5030-X 智能平车吸风款 Smart sewing machine with fan

主要功能 MAIN FUNCTIONS

自动计件功能
断线自动报警功能
底线结束报警功能
电子压脚功能
花样机所有功能 (需另购装置)

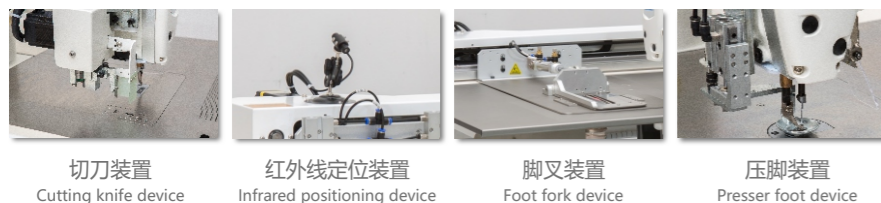
Automatic piece-counting function
Automatic thread-broken alarm function
Bobbin thread running out alarm function
Electronic pressure foot function
All functions of the pattern-sewing Machine(Optional)



应用场景 APPLICATION SCENARIO



选配装置 Optional Device



技术参数 TECHNICAL PARAMETERS

| | | |
|--------|---------------------------|---|
| 型号 | Model | LF-PZN5030-X |
| 机头 | Machine Head | 兄弟7300A(Brother) |
| 额定功率 | Rated Power | 1100W |
| 额定电压 | Rated Vol | 220V单相50Hz(必须有地线) 220V Single phase 50Hz (Earth wire is needed) |
| 使用气压 | Air Pressure | 0.5Mpa |
| 机针 | Needle | DPX17(8#,9#,11#,12#,14#) |
| 针距 | Pitch | 0.5mm至6mm |
| 压脚抬升幅度 | Presser foot lift height | 0-13mm |
| 控制系统 | Control System | 微电脑控制 Microcomputer control |
| 缝纫机转速 | Sewing Speed | 100-3200 rpm(MAX) |
| 记忆程序数量 | Number of memory programs | 999 |
| 真空电机功率 | Vacuum motor Power | 1.1kw |
| 机器重量 | Machine weight | 221kg |
| 机器尺寸 | Machine measurement | 133cm(Length)X118cm(Width)X124cm(Height) |

LF-PZN02-JC01 自动脚叉机 Automatic foot-crossing sewing machine

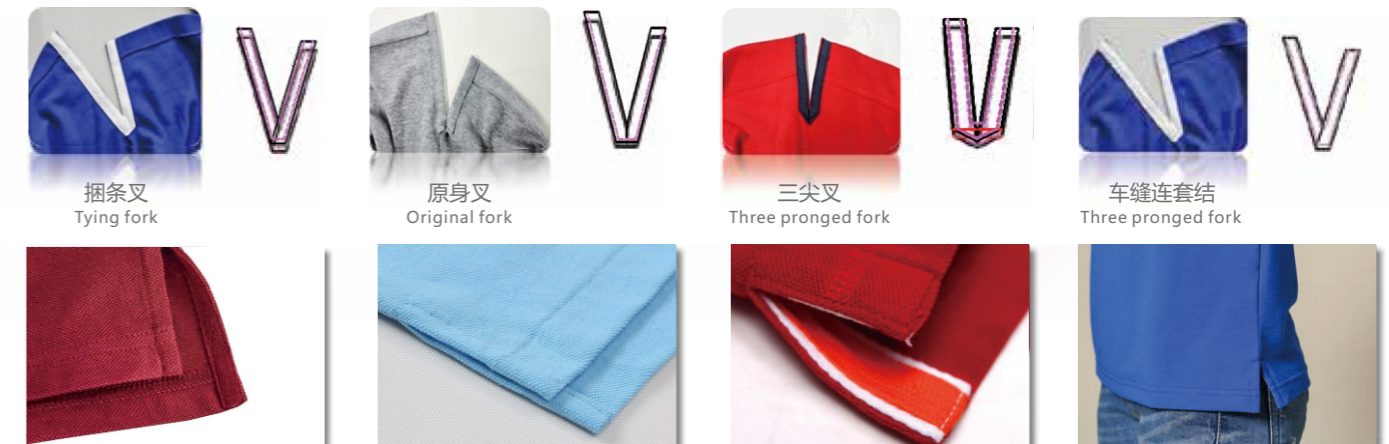
主要功能 MAIN FUNCTIONS

自动计件功能
断线自动报警功能
底线结束报警功能
电子压脚功能
花样机所有功能 (需另购装置)

Automatic piece-counting function
Automatic thread-broken alarm function
Bobbin thread running out alarm function
Electronic pressure foot function
All functions of the pattern-sewing Machine(Optional)



应用场景 APPLICATION SCENARIO



技术参数 TECHNICAL PARAMETERS

| | | |
|--------|---------------------------|---|
| 型号 | Model | LF-PZN02-JC01 |
| 机头 | Machine Head | 重机DDL-8000A(JUKI) |
| 额定功率 | Rated Power | 1100W |
| 额定电压 | Rated Vol | 220V单相50Hz(必须有地线) 220V Single phase 50Hz (Earth wire is needed) |
| 使用气压 | Air Pressure | 0.5Mpa |
| 机针 | Needle | DPX17 (8#,9#,11#,12#,14#) |
| 针距 | Pitch | 0.5mm至6mm |
| 压脚抬升幅度 | Presser foot lift height | 0-13mm |
| 控制系统 | Control System | 微电脑控制 Microcomputer control |
| 缝纫机转速 | Sewing Speed | 100-3200 rpm(MAX) |
| 记忆程序数量 | Number of memory programs | 999 |
| 真空电机功率 | Vacuum motor Power | 1.1kw |
| 机器重量 | Machine weight | 221kg |
| 机器尺寸 | Machine measurement | 110cm(Length)X90cm(Width)X124cm(Height) |

LF-PZN02-XC02 自动衬衫袖叉机

Automatic shirt sleeve plackets machine

产品特点 FEATURES

1. 缝纫机机头X轴方向运动, 袖衩模具Y轴方向运动, 可以满足缝制的精度
The sewing machine head moves in the X-axis direction and the sleeve mold moves in the Y-axis direction, which can meet the sewing accuracy
2. 袖叉模具结构, 可实现快速换款
Sleeve gap mold structure can realize quick change
3. 下托吸风装置, 可以提高袖衩折叠的稳定性。
The suction device under the support can improve the stability of the folding of the sleeves.
4. 电子随动辅助压脚装置, 保证了缝制的稳定性。
The electronic follow-up auxiliary presser foot device ensures the stability of sewing.
5. 适用面料广泛 (普通衬衫面料、免烫衬衫面料、针织类面料等)
Wide range of applicable fabrics (normal shirt fabric, non-iron shirt fabric, knitted fabric, etc)
6. 一台机可实现左右袖叉切换缝制, 无需另制模具
One machine can realize switching and sewing of left and right sleeves, no need to make another mold
7. 可加工袖叉长度: 50-200mm, 最宽50mm, 最窄18mm
Machinable sleeve length: 50-200mm, the widest is 50mm, the narrowest is 18mm



应用场景 APPLICATION SCENARIO



棉料 免烫面料
Cotton material Non ironing fabric



袖叉
Sleeve Slit



技术参数 TECHNICAL PARAMETERS

| | |
|--------------------------|--|
| 型号 Model | LF-PZN02-XC02 |
| 机头 Machine Head | 兄弟7300A |
| 额定功率 Rated Power | 290W |
| 额定电压 Rated Vol | 220V单相50Hz(必须有地线) 220V Single phase 50Hz (Earth wire is needed) |
| 使用气压 Air Pressure | 0.5Mpa |
| 控制系统 Control System | 单片机控制 |
| 工作速度 Work Speed | 3000rpm(MAX) |
| 缝制针距 Stitch length | 0.5-2.0mm |
| 机器重量 Machine weight | 395kg |
| 机器尺寸 Machine measurement | 145cm(Length)X124cm(Width)X127cm(Height) |

LF-TJ-XC02 大袖叉烫机

Big sleeves ironing machine

产品特点 FEATURES

1. 针对袖叉折烫工艺
For the sleeve and fork folding and ironing process
2. 采用吸风装置, 快速折烫定位
The suction device is adopted for quick folding and ironing positioning
3. 适用面料广泛 (普通衬衫面料、部分免烫衬衫面料、针织类面料等)
Applicable to a wide range of fabrics (ordinary shirting fabrics, some non-iron shirting fabrics, knitted fabrics, etc)
4. 一台机可实现左右袖叉大衩切换折烫, 无需另制模具
One machine can realize switching, folding and ironing of left and right sleeve slits and large slits, without the need for another mold
5. 袖叉长度: 100-210mm
Sleeve length: 100-210mm



应用场景 APPLICATION SCENARIO



袖叉
Sleeve Slit



技术参数 TECHNICAL PARAMETERS

| | |
|--------------------------|--|
| 型号 Model | LF-TJ-XC02 |
| 额定功率 Rated Power | 950W |
| 额定电压 Rated Vol | 220V单相50Hz(必须有地线) 220V Single phase 50Hz (Earth wire is needed) |
| 使用气压 Air Pressure | 0.5Mpa |
| 控制系统 Control System | PLC控制 |
| 工作速度 Work Speed | 2800-3000pcs/8h |
| 机器重量 Machine weight | 75kg |
| 机器尺寸 Machine measurement | 120cm(Length)X70cm(Width)X115cm(Height) |

PRODUCT DESCRIPTION

客户案例

Customer case

使用场景 USE SCENARIO

“技术为根、服务为本”为客户提供无忧保障，我们始终坚守产品的品质与服务，秉持初心，不断提升，为全球客户创造更优质的智能自动化缝纫设备。

We always adhere to the quality and service, stick to our original intention, and continue to improve to create high-quality intelligent automated sewing equipment for global customers.



PRODUCT DESCRIPTION

展会风采

Exhibition style

展会风采 EXHIBITION STYLE

公司每年在全国各地包括海外共参加十余场展会，凭借创新的智能化技术，各大展会现场人潮拥挤，备受观众喜爱，持续引发行业高度关注。

The company participates in more than a dozen exhibitions across the country and overseas every year, with innovative intelligent technology, the venues of the major exhibitions are crowded with, and are well received by the audience, continuously triggering high industry attention.



展会现场 EXHIBITION SITE

